

# Simply Deep

WELCOME TO THE SIMPLY DEEP BORDERLESS TAROT. THIS TAROT WAS ORIGINALLY PRINTED BY SCHIFFER PUBLISHING IN 2012 AND WE FELT THAT IT WOULD BE A GREAT IDEA TO RELEASE SIMPLY DEEP TAROT AS A BORDERLESS EDITION, WHICH CAPTURES ALL THE VIBRANT ILLUSTRATIONS OF THE ORIGINAL BUT IN A BORDERLESS FORMAT.

WATCH YOUR READINGS TAKE ON WHOLE NEW INTERPRETATIONS WHEN PLACED SIDE BY SIDE AND DISCOVER THE CLIENTS JOURNEY, BROUGHT TO LIFE THROUGH SEAMLESS STORYTELLING BY THESE BRIGHT QUIRKY CARDS.

CHANEL BAYLESS WORKED WITH SCHIFFER TO BRING ABOUT THE BORDERED EDITION OF THIS TAROT BUT I FELT THAT THE COLOUR CODED BORDERS IN THE ORIGINAL PRINTING SEEMED TO DISTRACT A LITTLE FROM THE IMAGERY.



OUR VERY FIRST DECK "A KING'S JOURNEY TAROT" WAS ORIGINALLY CREATED AS A BORDERLESS DECK WHICH CONNECTED WITH THE SURROUNDING CARDS IN A READING. NOW THAT THE SIMPLY DEEP TAROT HAS BEEN RELEASED FROM ITS BORDERS, THE DECK SEEMS MORE FREE, AND WHO KNOWS, MAY REVEAL MORE IN INTUITIVE READINGS THAN PREVIOUSLY THOUGHT!

AS ALWAYS, WE THANK YOU FOR SUPPORTING ART AND CELEBRATING CREATIVITY



## Tarot pouches

DOZENS OF TAROT  
BAGS / POUCHES CAN  
BE FOUND IN OUR STORE



[WWW.TAROTCOLLECTIBLES.COM](http://WWW.TAROTCOLLECTIBLES.COM)



# MAJORS

0- FOOL - EMBRACING THE UNKNOWN AND TAKING RISKS.

1- MAGICIAN - MANIFEST, PROJECT AND DIRECT. GATHER ALL YOUR TOOLS AND KNOWLEDGE TOGETHER TO MANIFEST YOUR WILL

2- THE HIGH PRIESTESS - UNVEILED DREAMS AND INTUITION. HELP FROM A HIGHER SOURCE. INTUITIVE INSIGHTS.

3- THE EMPRESS - BEAUTY, CREATION, RESPECT PREGNANCY. VALUING THE INNER FEMALE EXPRESSION

4- THE EMPEROR - ESTABLISHING BOUNDARIES. AUTHORITY FIGURE. DISCIPLINE.

5- THE HIEROPHANT - GUIDANCE COUNCILLOR, TRADITION, CONVENTIONAL RELIGION/MORALITY, PSYCHOTHERAPIST, CLIENT SEEKING ADVICE, PRIEST

6- THE LOVERS - SOULMATES. DIVINE MARRIAGE

7- THE CHARIOT - DECISION, CROSSROADS, FREEWILL. THIS DECISION WILL CHANGE YOUR DESTINY. DON'T ALLOW YOUR FREE WILL TO BE TRAMPLED BY ANYONE. TRAVEL

8- STRENGTH - APPROACH A SITUATION WITH CHARM INSTEAD OF FORCE. PERSONAL POWER, CONTROL AND CONFIDENCE.

9- HERMIT - CONTEMPLATION, RETREAT. STUDIOUS FIGURE. INTROVERTED, AND HAS A TENDENCY TO ISOLATE HIMSELF.



10- THE WHEEL OF FORTUNE - FORTUNE, CYCLE AND DESTINY.

11- JUSTICE - LAW, COURT, JUDGE, LEGALITY, FAIRNESS, EQUITY, CAUSE AND EFFECT. KARMA

12- HANGED MAN - LEISURE, SUSPENSION, PUTTING PROJECTS ON HOLD. SEEING THINGS FROM ANOTHER PERSPECTIVE

13- DEATH - PRUNING, MATURITY, AN INNER TRANSFORMATION.

14- TEMPERANCE - MODERATION, BALANCE AND EQUILIBRIUM

15- THE DEVIL - ENSLAVEMENT, ADDICTION, TEMPTATION AND LUST. BONDAGE

16- THE TOWER - DOWNFALL, RUIN. A TEST OF STRENGTH

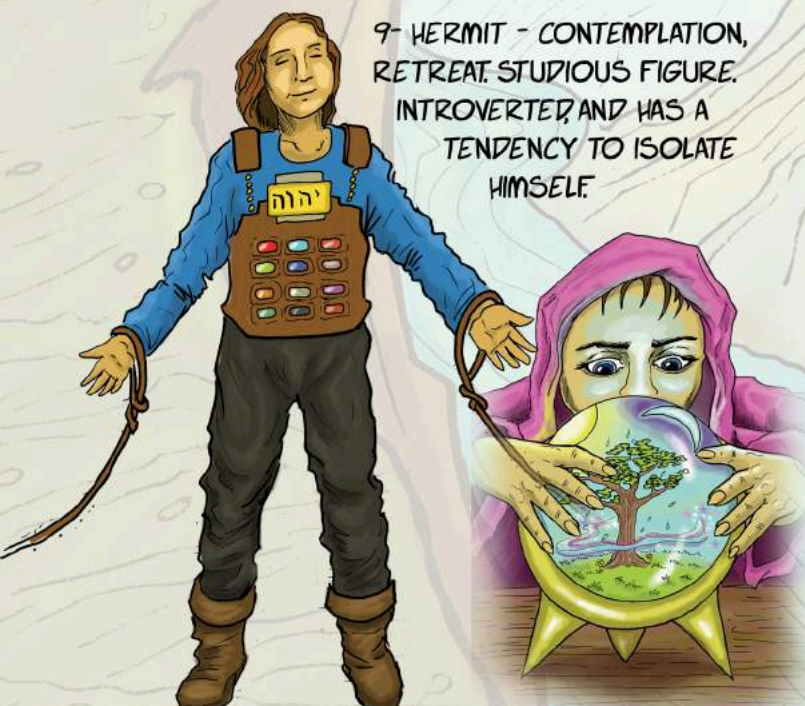
17- THE STAR - HOPE, OPTIMISM AND INNER BEAUTY. YOU ARE THE STAR OF YOUR OWN LIFE.

18- THE MOON - ILLUSIONS, SECRETS, DECEPTIONS ENCHANTMENT, DREAM, MISREPRESENTATION. MENTALLY INSTABLE.

19- THE SUN - HAPPY, SPONTANEOUS, PLAYFUL. SUMMER, WARM WEATHER.

20- JUDGEMENT - FORGIVENESS, RAPTURE, AND JUDGING YOU MAY NEED TO JUDGE A NEW SITUATION BEFORE GETTING INVOLVED

21- THE WORLD - COMPLETION, SUCCESS AND PROTECTION. FOR BETTER OR WORSE, THE END OF ONE JOURNEY AND THE BEGINNING OF ANOTHER. TRAVEL, ESPECIALLY OVERSEES TRAVEL. GOOD FORTUNE





# WANDS

ACE OF WANDS - ENERGY, A SPARK OF INSPIRATION

2 OF WANDS - PAINTING THE IDEAL FUTURE BY MAKING PLANS. IT'S UP TO YOU TO SCULPT AND MOLD THE THINGS YOU WISH FOR YOUR LIFE.

3 OF WANDS - WAITING FOR SOMETHING TO HAPPEN, TRAVELLING, TRADING, BUSINESS VENTURE, RETURNS. WAITING FOR YOUR SHIP TO COME IN.

4 OF WANDS - FESTIVITY, DANCING, MIRTH FESTIVAL, GATHERING, A CIVIL CEREMONY. LIVING TOGETHER

5 OF WANDS - MINOR DISPUTES, SMALL PROBLEMS. TIME TO TAKE A DEEP BREATH, REFOCUS AND DECLUTTER RATHER THAN BE FRUSTRATED

6 OF WANDS - HONOR, ACHIEVEMENTS, EXCELLENCE, TRAVEL BY LAND, SOMETIMES MEETING WITH A GREAT PERSON

7 OF WANDS - COMPETITION, STRIFE, A SITUATION THAT TESTS YOUR WORTH, MUCH ENERGY BEING BROUGHT TO A TASK

8 OF WANDS - SPEEDY MOVEMENT, ATTRACTION, COMMUNICATIONS, PHONE CALLS. MESSAGES. TRAVEL BY AIR. GOOD THINGS COME YOUR WAY



9 OF WANDS - ONCE BITTEN TWICE SHY. VIGILANCE, DEFENSIVE FEELING OR ACTION, SELF PROTECTION, KEEPING ONE'S GUARD

10 OF WANDS - TIRING WORK, LOSS OF ENERGY, COMPLETION OF TASK, HEAVY BURDEN, TAXING SITUATION. GIVE IT TIME AND IT MAY PAY OFF

PRINCESS OF WANDS- ACTIVE YOUTH, ATHLETE, PLAYFUL CHILD, MESSENGER, GOOD NEWS. EXPLORER

KNIGHT OF WANDS - A SILLY FLIRTY AND SPONTANEOUS YOUNG MAN. NOT VERY SERIOUS. A BIT OF A JOKER.

QUEEN OF WANDS - ENERGETIC WOMAN, EXTRAVERTED. LOVES SOCIETY AND ACTIVITY, VERY SOCIABLE, ALSO LIKES PLENTY OF MOVEMENT, AND THINGS THAT GROW

KING OF WANDS - COUNTRY GENTLEMAN, ACTIVE AND PHYSICAL, LIKES THE OUTDOORS AND FRESH AIR, COULD ALSO BE PATERNAL FIGURE, KIND AND HONEST DISPOSITION





# CUPS

ACE OF CUPS- THE GREAT EMOTIONAL IMPACT OF A SITUATION, INFATUATION, STIRRING OF FEELINGS. UNCONDITIONAL LOVE

2 OF CUPS- PARTNERSHIP, MARRIAGE, ACCORD BETWEEN TWO PEOPLE, HARMONY, COMPATIBILITY

3 OF CUPS- CELEBRATION, PARTY, BABY OR WEDDING SHOWER. JOY. CELEBRATE ALL THAT LIFE HAS AWARDED YOU. FRIENDSHIP AND GATHERING

4 OF CUPS - BOREDOM, DISTRACTION, SEVEN YEAR ITCH, THINKING THE GRASS IS GREENER ON THE OTHER SIDE. FANTASY AND DAYDREAMING

5 OF CUPS- DISAPPOINTMENT, SORROW, THE FEELING OF THE GLASS BEING HALF EMPTY INSTEAD OF BEING HALF FULL.

6 OF CUPS- PAST MEMORIES, ENCOUNTER WITH CHILDHOOD FRIEND, NOSTALGIA, CHILDLIKE FEELING THE COUNTRY, PLAY. SOMEONE MAY BE RETURNING FROM THE PAST

7 OF CUPS- YOU WANT IT ALL AND YOU WANT IT RIGHT NOW, BUT YOU AREN'T READY FOR IT. UNFORTUNATLY PUSHING FOR THESE GOALS WILL LEAD TO LUST, GREED, PRIDE AND OTHER SINFUL DESIRES. UNDERSTAND THE TRUE MEANING OF SUCCESS INSTEAD OF FINDING IT IN THINGS THAT DON'T LAST.



8 OF CUPS- LEAVING TOXIC RELATIONSHIPS AND TIES BEHIND YOU

9 OF CUPS - THE WISH CARD, FORTUNATE OUTCOME UNLESS SURROUNDED BY TOO MANY WATERY CARDS OR NEGATIVE CARDS

10 OF CUPS- FEELING OF FAMILY AND COMMUNITY, EMOTIONALLY CONTENT AND COMFORTABLE EASY FEELING, SECURITY

PRINCESS OF CUPS - EMOTIONALLY VERY CHILDLIKE. THINKS AND ACTS LIKE A CHILD. MAY GO THROUGH THE MOTIONS OF LOVE WHILE BEING DISTANT

KNIGHT OF CUPS - ADVENTURES OF THE HEART SEEM TO BE HIS PERSONAL JOURNEY. ROMANTIC

QUEEN OF CUPS - AN EMOTIONAL WOMAN, VERY SENSITIVE TO OTHER PEOPLE'S THOUGHTS AND EMOTIONS, SOMETIMES THERE'S A TENDENCY TO TAKE ON TOO MUCH EMOTIONAL BAGGAGE FROM LOVERS, FRIENDS ETC. EMPATHIC.

KING OF CUPS - AN INTENSE PERSONALITY BENEATH COOL EXTERIOR. CAN BE HIGHLY COMBUSTIBLE IF PROVOKED





# SWORDS

ACE OF SWORDS - JUDGEMENT, CLARITY OF THOUGHT, AN ATMOSPHERE OF ARGUMENT AND DEBATE... THE PEN IS MIGHTIER THAN THE SWORD

2 OF SWORDS - FIGHT OR FLIGHT DECISIONS. YOU MAY FEEL STUCK IN LIFE. AND MAYBE YOU JUST DON'T WANT TO SEE THINGS AS THEY REALLY ARE IN REALITY.. YOUR FUTURE IS AN OPEN BOOK IN WHICH YOU WRITE THE ENDING..

3 OF SWORDS - YOUR TRUST HAS BEEN BETRAYED AND YOUR FEELINGS ARE SHATTERED. SEPERATION AND LOSS. THERE'S NOTHING WRONG IN SHEDDING TEARS.. IT CAN CLEANSE YOUR SPIRIT AND HELP YOU MOVE ON. PERHAPS THERE WERE SOME HARSH TRUTHS THAT HURT YOU TO HEAR.

4 OF SWORDS - SHORT BREAK. REST AFTER MENTAL OR EMOTIONAL STRIFE. TIME TO TAKE A STEP BACK AND RE-EVALUATE YOUR LIFE. REST AFTER A BATTLE

5 OF SWORDS - A NO WIN SITUATION, SACRIFICING PRINCIPAL FOR MOMENTARY VICTORY. FEELING MENTALLY OVERWHELMED BY A SITUATION. THIS CARD REMINDS ME OF THE FEELING A CHILD GETS WHEN ASKED TO CLEAN THEIR ROOM; THE TASK SEEMS SO VAST THEY QUIT BEFORE THEY BEGIN.

6 OF SWORDS - ESCAPING CONFLICT, TRAVEL ACROSS WATER, PASSAGE TO SAFETY OR MAYBE NOT. BEGINNING OF A SPIRITUAL JOURNEY INTO THE CORE OF YOUR BEING



7 OF SWORDS - STEALTH, OUT OF THE BOX THINKING, UNUSUAL STRATEGY, DUPLICITY, TREACHERY, ALSO OVERWEENING CONFIDENCE LEADING TO DEFEAT

8 OF SWORDS - RESTRICTION, PHYSICAL, MENTAL OR EMOTIONAL. IMPRISONED BY ONE'S OWN LIMITED THINKING. YOUR CURRENT PERCEPTION IS ONLY AN ILLUSION. TRY TO FIND ANOTHER WAY OF THINKING ABOUT THINGS.

9 OF SWORDS - FEAR, WORRY, ANXIETY, SLEEPLESSNESS AND NIGHTMARES, BROUGHT ABOUT BY FEAR OF THE UNKNOWN.

10 OF SWORDS - A BAD ENDING, NEGATIVE OUTCOME, THE FEARS EXPRESSED IN THE NINE BECOME MANIFEST. YOU HAVE HIT ROCK BOTTOM.

PRINCESS OF SWORDS - ALERTNESS, INTELLIGENCE, INQUISITIVENESS, CURIOSITY, PRYING, A JEALOUS YOUTH WHO MAY CAUSE PROBLEMS.

KNIGHT OF SWORDS - THE BERSERKER CARD, A WILD ENERGY. QUICK THOUGHT, HASTY ACTIONS AND DARING. DIFFICULT TO TAME. MAY RUN INTO THE FACE OF DANGER WITHOUT THINKING THINGS THROUGH

QUEEN OF SWORDS - WIDOW, PROBLEMS WITH INTERPERSONAL RELATIONSHIPS. AN INTELLIGENT WOMAN CONCERNED WITH EQUITY AND FAIRNESS, SEPARATION, A WOMAN WITH A TROUBLED PAST

KING OF SWORDS - MAN OF AUTHORITY OR UNIFORM, A MAN OF PRINCIPLE WITH A QUICK WIT AND TONGUE, FLATTERY, MATTERS OF LAW, ERUDITE



# COINS

ACE OF COINS - MONEY, WEDDING RING, A GIFT, FINANCIAL OPPORTUNITY, INHERITANCE.

2 OF COINS - WEIGH YOUR OPTIONS AND LEARN TO PRIORITISE YOUR TIME JUGGLING RESPONSIBILITIES, FINANCES, JOBS AND COMMITMENTS.

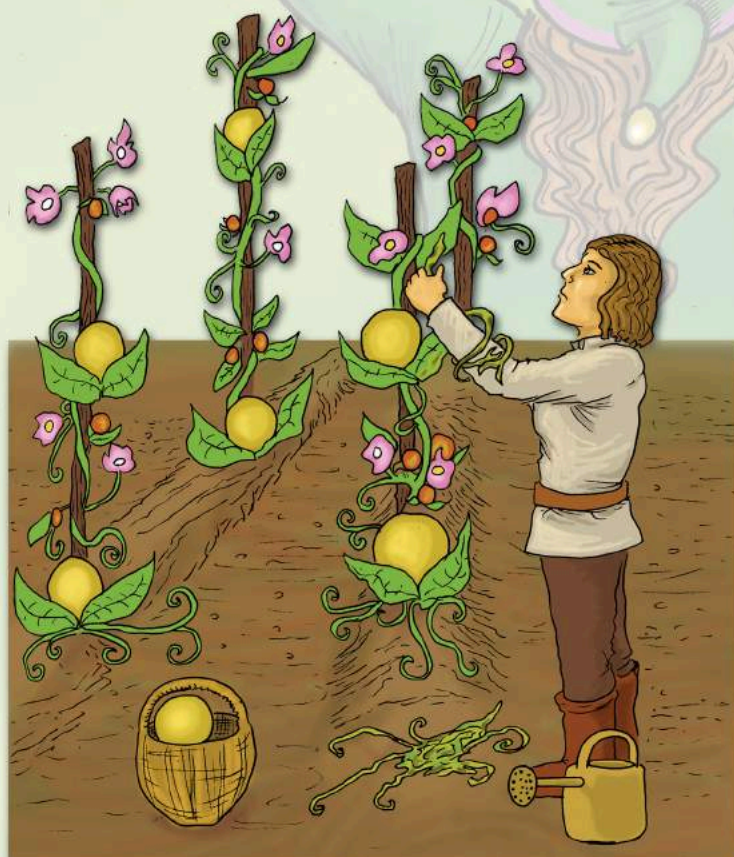
3 OF COINS - PUTTING YOUR IDEAS ON PAPER. DESIGNING, LABOR, WORK, EMPLOYMENT AND SKILL

4 OF COINS- USING MONEY AND POSSESSIONS AS A SECURITY BLANKET. INVESTING IN THINGS RATHER THAN PEOPLE.

5 OF COINS - FEELING IMPOVERISHED AND EMPTY INSIDE. THINK ABOUT INVESTING IN YOURSELF MORE.

6 OF COINS - SHARING THE WEALTH WITH OTHERS. KARMA, GIVE AND TAKE, GENEROSITY AND GIFTS.

7 OF COINS - NURTURING PROJECTS, BEING PATIENT AND HAVING PERSISTENCE. WAITING PATIENTLY FOR RESULTS.



8 OF COINS - PERFECTING SKILLS. DEVELOPING YOUR NATURAL TALENTS. CONCENTRATION, ATTENTION TO DETAIL. ART

9 OF COINS - THE NEED TO SOCIALISE MORE. LEAVE THE COMFORT OF HOME AND BROADEN YOUR HORIZONS. CONTENTMENT, PLENTY, SUSTENANCE, LIVLIHOOD

10 OF COINS- HOME, RESIDENCE, RETIREMENT, FAMILY, INHERITANCE, GENERATIONS. AN ESTATE

PRINCESS OF COINS - STUDIOUS YOUNG WOMAN. RELIABLE AND PRACTICAL. CULTURED PERSONALITY. NEWS ABOUT JOBS, FINANCIAL PROSPECTS AND GAIN

KNIGHT OF COINS - STUBBORN YOUNG MAN WHO IS OPINIONATED. STRONG LABORER WHO IS DEDICATED TO THEIR PERSONAL GOALS.

QUEEN OF COINS- GENEROUS AND CARING MATERNAL FIGURE. PRACTICAL LADY

KING OF COINS- DEDICATED AND HARD WORKING, GOOD PROVIDER. GOOD AT HANDLING MONEY