

Chinese Propaganda Art Tarot Majors

0- FOOL - BEGINNINGS, INNOCENCE, FOLLY, RECKLESSNESS, ABANDONMENT, RUSHING IN WHERE ANGELS FEAR TO TREAD, MADNESS, CARELESSNESS

1- MAGICIAN - CONTROL, MASTERY, SELF DISCIPLINE, SKILL, A MANIPULATIVE PERSONALITY, THE DESIRE FOR POWER AND INFLUENCE

2- THE HIGH PRIESTESS - MYSTERY, INTUITION, THE UNKNOWN, DIVINATION, HIGHER FORCE, INNER VOICE, SPIRIT GUIDE

3- THE EMPRESS - FERTILITY, MOTHER, A MATERNAL INFLUENCE, GROWTH, GAIN AND ABUNDANCE

4- THE EMPEROR - POWER, WORLDLY INFLUENCE, PATERNITY, RULE AND AUTHORITY

5- THE HIEROPHANT - GUIDANCE COUNCILLOR, TRADITION, CONVENTIONAL RELIGION, PSYCHOTHERAPIST, CLIENT SEEKING ADVICE, PRIEST

6- THE LOVERS - MARRIAGE, UNION, CHOICE

7- THE CHARIOT - GAINING CONTROL OVER A SITUATION, COURAGE, TRAVEL, VICTORY, SKILL AND STRENGTH BUILT UP OVER TIME THROUGH PRACTICE, ADEPTNESS, GAMBLING AND SPORT

8- STRENGTH - SUBJUGATION, COURAGE, FEMININE INFLUENCE ON THE MASCULINE, GRACE, COMPASSION, PHYSICAL STRENGTH AND COMPASSIONATE RULE

9- HERMIT - INTROVERSION, INTROSPECTION, A LONER TYPE PERSONALITY, SEEKING KNOWLEDGE WITHIN, RETREAT. SOUL SEARCHING AND SOLITUDE

10- THE WHEEL OF FORTUNE - KARMA, DESTINY, FATE, UNFORESEEN TURN OF EVENTS

11- JUSTICE - LAW, COURT, LEGALITY, FAIRNESS, EQUITY, CAUSE AND EFFECT

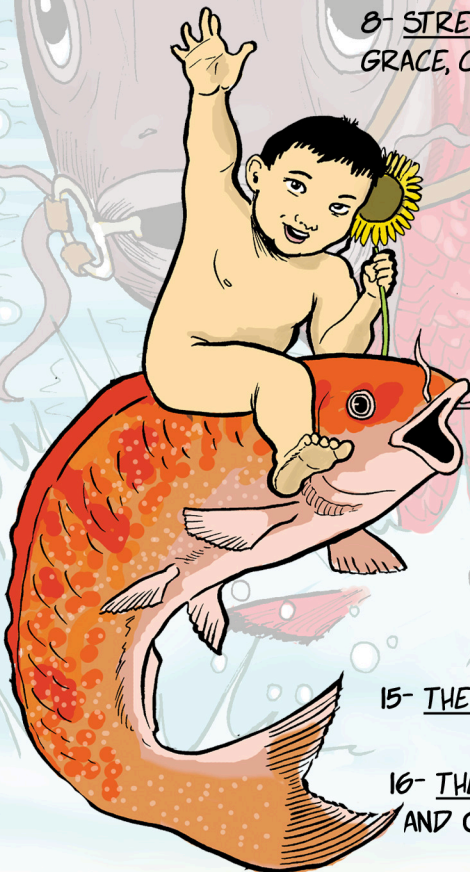
12- HANGED-MAN - SUSPENSION OF ACTION, SELF SACRIFICE, RESTRICTION

13- DEATH - ABRUPT CHANGE, END OF A MATTER, FATE

14- TEMPERANCE - THE RIGHT STUFF, HARMONY BETWEEN THINGS, SOUL MATES, MODERATION

15- THE DEVIL - ENSLAVEMENT, ADDICTION, PROSPERITY IN MONEY MATTERS

16- THE TOWER - SUDDEN, UNFORESEEN DESTRUCTION OF BELIEF, RELATIONSHIPS AND OBJECTS. A PAINFUL DISCOVERY. BREAKING DOWN OF ILLUSIONS



Chinese Propaganda Art Tarot

Majors

17- THE STAR - AFTER DESTRUCTION HOPE, A WISH, INSPIRATION AND HEALING

18- THE MOON - SEEING THINGS THROUGH A GLASS DARKLY, MUDDY VISION, ENCHANTMENT, DREAM, ILLUSION, DECEPTION AND MISREPRESENTATION

19- THE SUN - CHILDHOOD PLAYFULNESS, A MOMENT IN THE SPOTLIGHT, FAME, WARMTH, SUMMER AND SPRING, GREAT WEATHER, SUCCESS, A FORTUITOUS CARD

20- JUDGMENT - RESURRECTION, TRANSFORMATION FROM ONE STATE TO ANOTHER OR ONE THING INTO ANOTHER, METAMORPHOSIS, REBIRTH

21- THE WORLD - TRAVEL TO ANOTHER COUNTRY, SUCCESS, END OF CYCLE, CONCLUSION OF MATTER, ACHIEVEMENTS

Wands

ACE OF WANDS - COMMENCEMENT OF ACTION, THE WANDS ARE KINETIC SIGNIFYING MOVEMENT OR ENERGY.

2 OF WANDS - MAKING PLANS FOR THE FUTURE, DECIDING HOW TO PURSUE A GOAL, STRATEGIZING FOR THE FUTURE, ENTERPRISE

3 OF WANDS - WAITING FOR SOMETHING TO HAPPEN, TRAVELLING, TRADING, BUSINESS VENTURE, RETURNS

4 OF WANDS - FESTIVITY, DANCING, MIRTH, FESTIVAL, GATHERING, A CIVIL CEREMONY, LIVING TOGETHER

5 OF WANDS - MINOR DISPUTES, STRUGGLES, SMALL PROBLEMS

6 OF WANDS - HONOR, ACHIEVEMENTS, EXCELLENCE, TRAVEL BY LAND, SOMETIMES MEETING WITH A GREAT PERSON

7 OF WANDS - COMPETITION, STRIFE, A SITUATION THAT TESTS YOUR WORTH, MUCH ENERGY BEING BROUGHT TO A TASK

8 OF WANDS - SPEEDY MOVEMENT, ATTRACTION, COMMUNICATIONS, PHONE CALLS, MESSAGES, TRAVEL BY AIR

9 OF WANDS - VIGILANCE, DEFENSIVE FEELING OR ACTION, SELF PROTECTION, KEEPING ONE'S GUARD UP, BLOCKING ATTACK

10 OF WANDS - TIRING WORK, LOSS OF ENERGY, COMPLETION OF TASK, HEAVY BURDEN, TAXING SITUATION



Chinese Propaganda Art Tarot Wands

PAGE OF WANDS - ACTIVE YOUTH, ATHLETE, PLAYFUL CHILD, MESSENGER, GOOD NEWS

KNIGHT OF WANDS - JOURNEY, ABSENCE, DEPARTURES, TRIPS, GREAT SPEED

QUEEN OF WANDS - ENERGETIC WOMAN, EXTRAVERTED, LOVES SOCIETY AND ACTIVITY, VERY SOCIABLE, ALSO LIKES PLENTY OF MOVEMENT, AND THINGS THAT GROW

KING OF WANDS - COUNTRY GENTLEMAN, ACTIVE AND PHYSICAL, LIKES THE OUTDOORS AND FRESH AIR, COULD ALSO BE PATERNAL FIGURE, KIND AND HONEST DISPOSITION

Swords

ACE OF SWORDS - JUDGEMENT, CLARITY OF THOUGHT, AN ATMOSPHERE OF ARGUMENT AND DEBATE.

2 OF SWORDS - THE STRAIN AFTER AN ARGUMENT OR DISAGREEMENT. THIS CARD IS SOMETIMES CALLED THE LORD OF PEACE RESTORED. THE WATERS IN THE BACKGROUND SHOW A DISTURBANCE IN FEELING SLOWLY EBBING AWAY. TENSION. THE IDEA BEHIND THIS CARD IS STRESS SUBSIDING AFTER CONFLICT.

3 OF SWORDS - DIVISION, RUPTURE, REVOLUTION, ALL CARDS ARE ON THE TABLE, OPEN CONFLICT AND SUBSEQUENT SORROW. THE IDEA OF SAMKHĀRA-DUKKHATAA WITH IT'S MENTAL ANGUISH. THE SUPPRESSED HOSTILITY IN THE TWO HAS RISEN TO THE SURFACE. WAR

4 OF SWORDS - REST AFTER MENTAL OR EMOTIONAL STRIFE. RECOVERY AFTER BATTLE. RENEWAL OF ENERGY AFTER HOSTILITIES, BED-REST, ILLNESS

5 OF SWORDS - A NO WIN SITUATION, SACRIFICING PRINCIPAL FOR MOMENTARY VICTORY. FEELING MENTALLY OVERWHELMED BY A SITUATION. THIS CARD REMINDS ME OF THE FEELING A CHILD GETS WHEN ASKED TO CLEAN THEIR ROOM; THE TASK SEEMS SO VAST THEY QUIT BEFORE THEY BEGIN.

6 OF SWORDS - ESCAPING CONFLICT, TRAVEL ACROSS WATER, PASSAGE TO SAFETY OR MAYBE NOT

7 OF SWORDS - STEALTH, OUT OF THE BOX THINKING, UNUSUAL STRATEGY, DUPLICITY, TREACHERY, ALSO OVERWEENING CONFIDENCE LEADING TO DEFEAT

8 OF SWORDS - RESTRICTION PHYSICAL, MENTAL OR EMOTIONAL, IMPRISONED BY ONE'S OWN LIMITED THINKING

9 OF SWORDS - FEAR, WORRY, ANXIETY, SLEEPLESSNESS, NIGHTMARES. I CALL THIS THE NIGHTMARE CARD. ON THE SURFACE, THE CARD SEEMS TO BE ALL DOOM AND GLOOM, BUT ON CLOSER EXAMINATION, IT REPRESENTS A FEAR OR PHOBIA A CLIENT HAS THAT CAUSES BAD DREAMS AND ANXIETY ATTACKS. DREAD



Chinese Propaganda Art Tarot Swords

10 OF SWORDS - A BAD ENDING, NEGATIVE OUTCOME, THE FEARS EXPRESSED IN THE NINE BECOME MANIFEST

PAGE OF SWORDS - ALERTNESS, INTELLIGENCE, INQUISITIVENESS, CURIOSITY, PRYING, A JEALOUS YOUTH WHO MAY CAUSE PROBLEMS

KNIGHT OF SWORDS - THE BERSERKER CARD, A WILD ENERGY. QUICK THOUGHT, HASTY ACTIONS, DARING

QUEEN OF SWORDS - WIDOW, PROBLEMS WITH INTERPERSONAL RELATIONSHIPS, INTELLIGENT WOMAN CONCERNED WITH EQUITY AND FAIRNESS, SEPARATION, A WOMAN WITH A TROUBLED PAST

KING OF SWORDS - MAN OF AUTHORITY OR UNIFORM, A MAN OF PRINCIPLE WITH A QUICK WIT AND TONGUE, FLATTERY, MATTERS OF LAW, ERUDITE

Cups

ACE OF CUPS - THE GREAT EMOTIONAL IMPACT OF A SITUATION, INFATUATION, STIRRING OF FEELINGS

2 OF CUPS - PARTNERSHIP, MARRIAGE, ACCORD BETWEEN TWO PEOPLE, HARMONY, COMPATIBILITY

3 OF CUPS - CELEBRATION, PARTY, BABY OR WEDDING SHOWER, JOY

4 OF CUPS - BOREDOM, DISTRACTION, SEVEN YEAR ITCH, ENNUI

5 OF CUPS - UNFULFILLED JOY, SORROW
DISAPPOINTMENT, POSSIBLE INFIDELITY, FAILED
RELATIONSHIP TEMPTATION

6 OF CUPS - PAST MEMORIES, ENCOUNTER WITH
CHILDHOOD FRIEND, NOSTALGIA, CHILDLIKE FEELING,
THE COUNTRY, PLAY

7 OF CUPS - IMAGINATION, DISTRACTIBILITY,
DAYDREAMING, CREATIVITY, IMAGINING THE
POSSIBILITIES, FANTASY

8 OF CUPS - TURNING AWAY FROM THE
DAYDREAMING IN THE PREVIOUS CARD AND
WORKING TOWARD
REALIZATION OF WISHES, ABANDONING FALSE HOPE

9 OF CUPS - THE WISH CARD, FORTUNATE OUTCOME UNLESS
SURROUNDED BY TOO MANY WATERY CARDS OR NEGATIVE CARDS

10 OF CUPS - FEELING OF FAMILY AND COMMUNITY, EMOTIONAL
CONTENT AND COMFORTABLE EASY FEELING,
SECURITY



Chinese Propaganda Art Tarot

Cups

PAGE OF CUPS - MESSAGE OF LOVE, SENTIMENTAL YOUTH OR LOVER, BIRTH ANNOUNCEMENT, INFATUATION

KNIGHT OF CUPS - PROPOSAL, COURTSHIP, BRIEF AFFAIR, LOVE LETTER

QUEEN OF CUPS - AN EMOTIONAL WOMAN VERY SENSITIVE TO OTHER PEOPLE'S THOUGHTS AND EMOTIONS, SOMETIMES THERE'S A TENDENCY TO TAKE ON TOO MUCH EMOTIONAL BAGGAGE FROM LOVERS, FRIENDS AND ETC

KING OF CUPS - AN INTENSE PERSONALITY BENEATH COOL EXTERIOR. CAN BE HIGHLY COMBUSTIBLE IF PROVOKED

Coins

ACE OF COINS - MONEY, WEDDING RING, A GIFT, FINANCIAL OPPORTUNITY, INHERITANCE

2 OF COINS - JUGGLING RESPONSIBILITIES, FINANCES, JOBS AND COMMITMENTS. THE IDEA OF THE ETERNAL FLUX, LIFE'S CONSTANT CHANGES

3 OF COINS - LABOR, WORK, EMPLOYMENT, SKILL, TRADE, APPRENTICESHIP

4 OF COINS - MISERLINESS, SAVING, ECONOMY, GREED, INVESTMENTS, PLACING INORDINATE IMPORTANCE PUT ON THINGS RATHER THAN PEOPLE, ISOLATION, THE IMAGE IS BASED ON THE CHARACTER OF GOLLUM FROM THE LORD OF THE RINGS WHOSE DESIRE FOR THE RING POSSESSES HIM AND DEFORMS HIS CHARACTER AND COUNTENANCE.

5 OF COINS - POVERTY, SPIRITUAL DESTITUTION AND DEPRIVATION. HOPELESSNESS, A LACK OF LOVE, FAITH AND HOPE.

6 OF COINS - KARMA, GIVE AND TAKE, GENEROSITY AND GIFTS.

7 OF COINS - HARD LABOR, TOIL, STRENUOUS WORK, REAPING

8 OF COINS - CONCENTRATION, ATTENTION TO DETAIL, ART

9 OF COINS - CONTENTMENT, PLENTY, SUSTENENCE, LIVLIHOOD

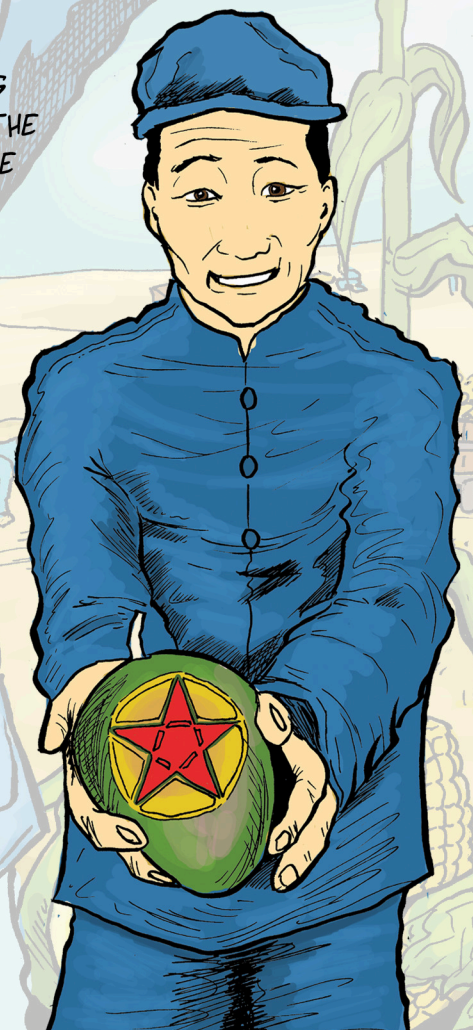
10 OF COINS - HOME, RESIDENCE, RETIREMENT, FAMILY, INHERITANCE, GENERATIONS

PAGE OF PENTACLES - NEWS ABOUT JOBS, FINANCIAL PROSPECTS, AND GAIN

KNIGHT OF PENTACLES - LABORER, METHODICAL APPROACH, PATIENCE, SLOW DEVELOPMENT

QUEEN OF PENTACLES - EARTH MOTHER, PRACTICAL WOMAN, NO NONSENSE APPROACH, MATRIARCH, FAMILY VALUES, LOVER OF ORGANIC FOOD AND PRODUCTS

KING OF PENTACLES - WEALTH, SECURITY, STABILITY, A MAN OF POWER AND AUTHORITY IN THE PHYSICAL WORLD, BANKER, FINANCES, RETIREMENT



Depicting the Cultural Revolution

DUE TO THE NATURE OF PROPAGANDA ART, OUR IMAGES ARE GENERALLY OPTIMISTIC AND CHEERFUL, WITH SMILES, ROSY CHEEKS AND BRIGHT COLOURS GALORE. THIS, ESSENTIALLY, IS WHAT MOST PROPAGANDA ART CONSISTS OF.

WE DO HOWEVER RECOGNISE THAT MANY PEOPLE SUFFERED DURING THE CULTURAL REVOLUTION.

I LIKE TO THINK THAT THE NEGATIVE TYPE CARDS IN THE TAROT REPRESENT THE MORE NEGATIVE ASPECTS OF THE CULTURAL REVOLUTION. I LIKE TO THINK ALSO THAT WE'VE BEEN RESPECTFUL AND FAIR TO THOSE WHO ACTUALLY LIVED THROUGH THIS TRYING TIME BY CREATING ILLUSTRATIONS ESPECIALLY FOR THIS TAROT, AS, TO MY KNOWLEDGE, I'M NOT AWARE OF ANY MAO ERA PROPAGANDA ART DEPICTING THE FAMINE ETC. WHILE OUR TAROT IS BASED ON THE OVERLY OPTIMISTIC PROPAGANDA, WE FELT THAT TO PRETEND THAT THESE DARKER EVENTS DID NOT HAPPEN WOULD HAVE BEEN INSENSITIVE IN AND OF ITSELF.



OUR EIGHT OF SWORDS FEATURES THE NAMING AND SHAMING OF THOSE THEY CONSIDERED "REACTIONARIES". THIS WAS BASICALLY A SHAMING RITUAL KNOWN AS "STRUGGLE SESSIONS" WHERE THE ACCUSED WAS FORCED TO ADMIT THEIR CRIMES IN FRONT OF AN AUDIENCE. USED AS A SORT OF BADGE OF SHAME, THEY WORE WHAT WE'D CALLED IN BRITAIN "DUNCE CAPS".

THE TOWER CARD IN OUR TAROT DEPICTS THE DESTRUCTION OF THE FOUR OLDS. (OLD CUSTOMS, OLD CULTURE, OLD HABITS AND OLD IDEAS) OUR 4 AND 5 OF PENTACLES BOTH FEATURE SCENES OF STARVATION WHICH DEPICT THE GREAT FAMINE, ALONG WITH OUR DEATH CARD WHICH FEATURES TWO DEAD CHILDREN IN THE HANDS OF A MYTHOLOGICAL CHINESE DEATH GOD.

WE LIKE TO THINK THAT WE'VE BEEN FAIR IN OUR PORTRAYAL OF THE EVENTS DURING THE CULTURAL REVOLUTION IN OUR TAROT INCLUDING A VAST RANGE OF IMAGERY THAT RELATES TO THE TIME PERIOD.

